

**INTENTIONALLY**

**LEFT**

**BLANK**

**INTENTIONALLY**

**LEFT**

**BLANK**

**INTENTIONALLY**

**LEFT**

**BLANK**

**INTENTIONALLY**

**LEFT**

**BLANK**

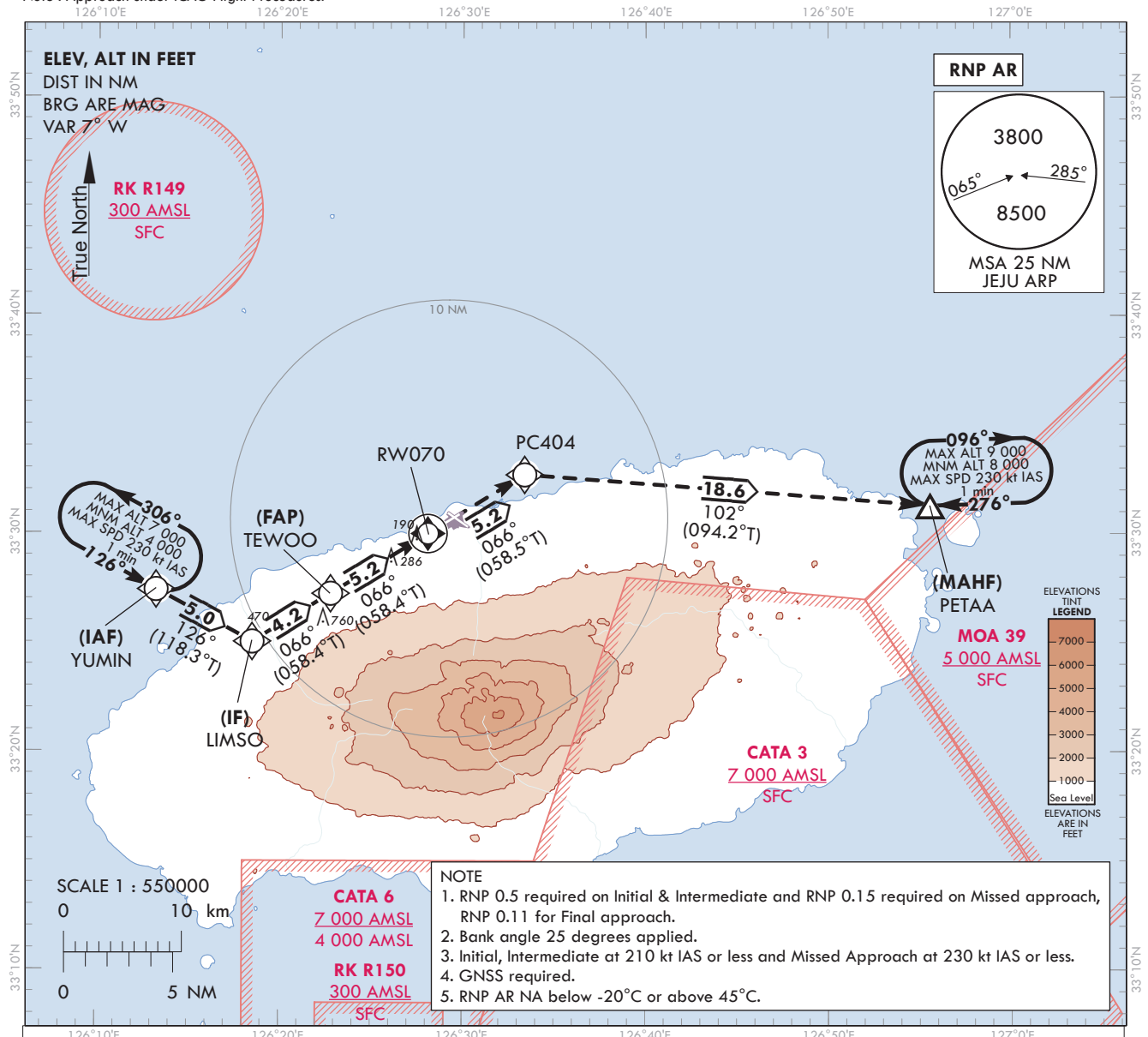


INSTRUMENT  
APPROACH  
CHART - ICAOAERODROME ELEV 119 ft  
HEIGHTS RELATED TO  
THR RWY 07 - ELEV 87 ftJEJU APP 121.2  
124.05  
JEJU TWR 118.2  
118.55

JEJU/Jeju Intl(RKPC)

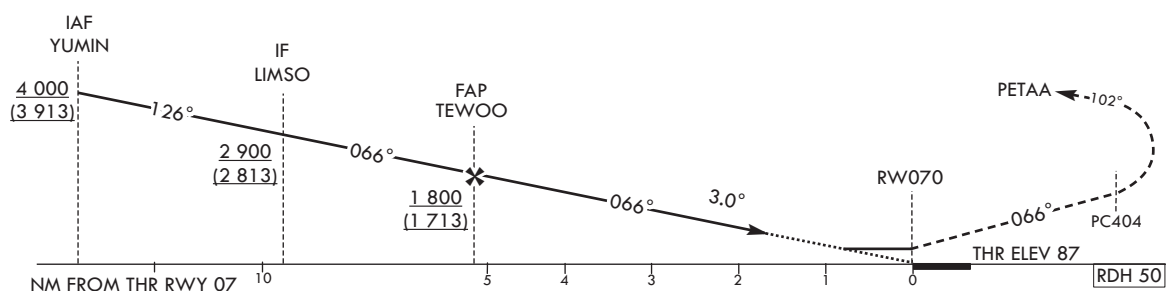
RNP Z RWY 07(AR)

Note : Approach under ICAO Flight Procedures.

TRANSITION ALT 14 000  
TRANSITION LVL FL 140

## MISSED APPROACH

Climb to 8 000 ft on track of 066° to PC404, then RIGHT turn on track of 102° to PETAA.



						Knots	60	90	120	150	180	
OCA (H)		A	B	C	D	Rate of descent	V/V fpm	319	478	637	796	956
Straight-in Approach	RNP 0.11	360 (273)					* Timing Not authorized for defining MAPt. * Circling Not authorized.					

Change : Information of landing minima(OCA(H)).

JEJU/Jeju Intl(RKPC)  
RNP Z RWY 07(AR)

## AERONAUTICAL DATA TABULATION

## Instrument Approach Procedure Coding Tables

## RNP Z RWY 07(AR)

Serial Number	Path Descriptor	Waypoint Identifier	Fly-over	Course/Track °M(°T)	Distance (NM)	Turn direction	Altitude (ft)	Speed (kt)	Coordinates	VPA/ RDH	Navigation specification	Remarks
001	IF	YUMIN	-	-	-	-	+4 000	-210	33°27'25.7"N 126°13'15.5"E	-	RNP 0.5	IAF
002	TF	LMSO	-	126(118.3)	5.0	-	+2 900	-210	33°25'03.0"N 126°18'31.0"E	-	RNP 0.5	IF
003	TF	TEWOO	-	066(058.4)	4.2	-	+1 800	-	33°27'15.3"N 126°22'47.5"E	-	RNP 0.11	FAP
004	TF	RW070	Y	066(058.4)	5.2	-	-	-	33°29'59.57"N 126°28'06.50"E	-3.00/50	RNP 0.11	Bank angle 25°
005	TF	PC404	-	066(058.5)	5.2	-	-	-	33°32'42.3"N 126°33'23.4"E	-	RNP 0.15	Bank angle 25°
006	TF	PETAA	Y	102(094.2)	18.6	-	-	-	33°31'18.0"N 126°55'34.0"E	-	RNP 0.15	-
007	HM	PETAA	Y	276(268.2)	-	R	-9 000 +8 000	-230	33°31'18.0"N 126°55'34.0"E	-	RNP 0.15	1 min (Outbound timing)

## HOLDING PROCEDURE

Holding Identification	Path Descriptor	Waypoint Identifier	Fly-over	Course/Track °M(°T)	Time (min)	Turn direction	Altitude (ft)	Speed (kt)	Coordinates	VPA/ RDH	Navigation specification	Remarks
RNP Z RWY 07	HM	YUMIN	Y	126(118.3)	1.0	L	-7 000 +4 000	-230	33°27'25.7"N 126°13'15.5"E	-	RNP 0.5	-

**INSTRUMENT  
APPROACH  
CHART - ICAO**

**AERODROME ELEV 119 ft**  
HEIGHTS RELATED TO  
THR RWY 07 - ELEV 87 ft

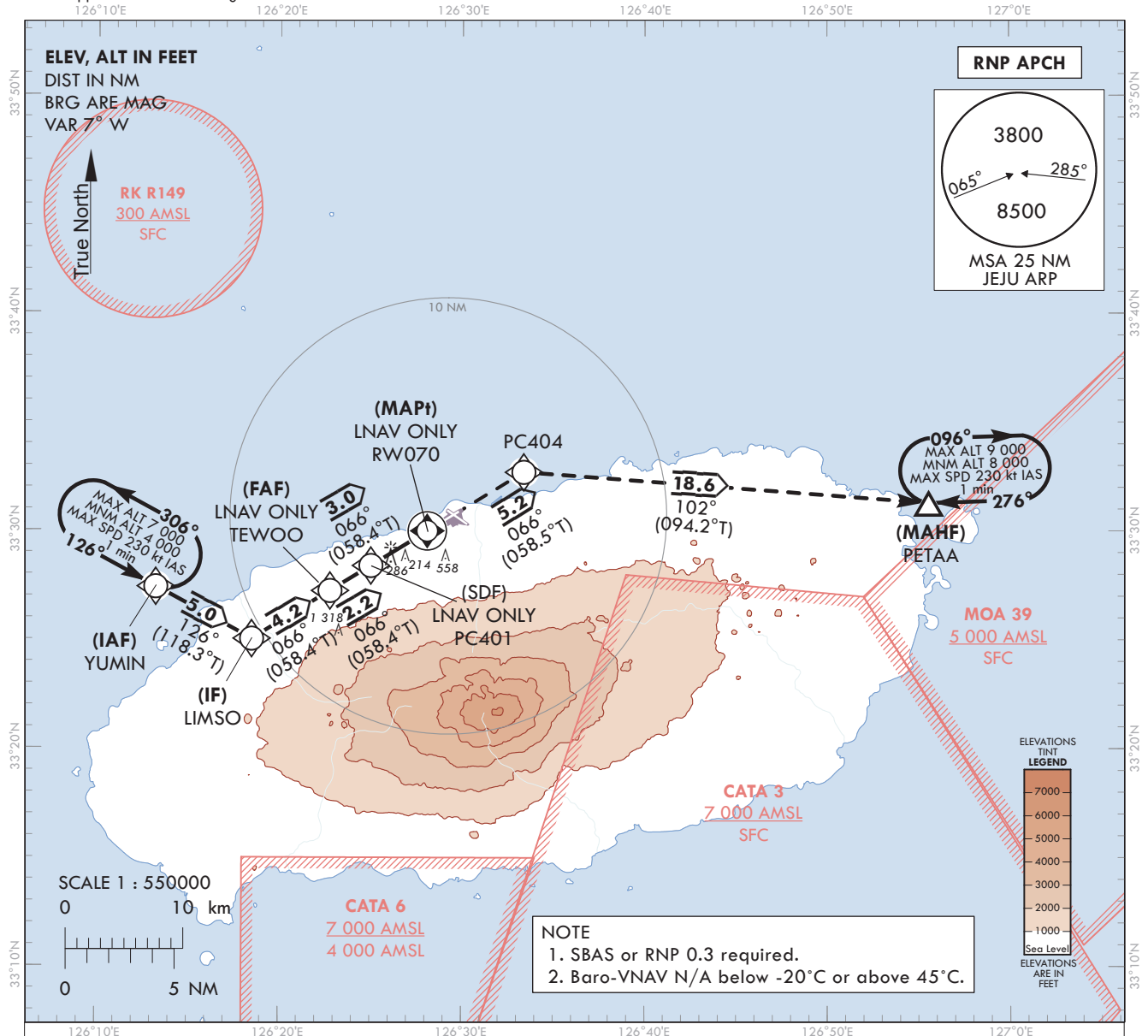
JEJU APP 121.2  
JEJU TWR 124.05  
118.2  
118.55

KASS  
CH52013  
K07A  
RDH : 50

**JEJU/Jeju Intl(RKPC)**

**RNP Y RWY 07**

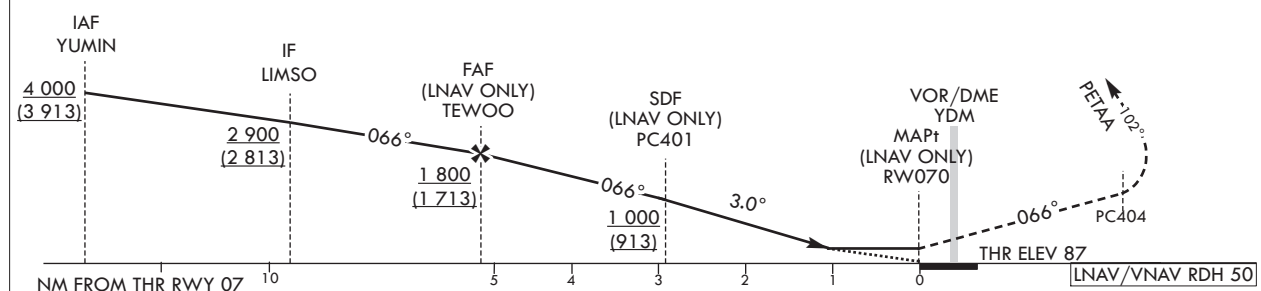
Note : Approach under ICAO Flight Procedures.



TRANSITION ALT 14 000  
TRANSITION LVL FL 140

**MISSED APPROACH**

Climb to 8 000 ft on track of 066° to PC404, then RIGHT turn on track of 102° to PETAA and Hold at 8 000 ft.



OCA (H)		A	B	C	D
Straight-in Approach	LPV	430 (343)			
	LNAV/VNAV	560 (473)			
	LNAV	640 (553)			

Knots		60	90	120	150	180
Rate of descent	V/V fpm	318	478	637	796	955

\* Timing Not authorized for defining MAPt.  
\* Circling Not authorized.

Change : Information of landing minima(OCA(H)).

JEJU/Jeju Intl(RKPC)  
RNP Y RWY 07

## AERONAUTICAL DATA TABULATION

## Instrument Approach Procedure Coding Tables

RNP Y RWY 07

Serial Number	Path Descriptor	Waypoint Identifier	Fly-over	Course/Track °M(°T)	Distance (NM)	Turn direction	Altitude (ft)	Speed (kt)	Coordinates	VPA/RDH	Navigation specification	Remarks
001	IF	YUMIN	-	-	-	-	+4 000	-	33°27'25.7"N 126°13'15.5"E	-	RNP APCH	IAF
002	TF	LMSO	-	126(118.3)	5.0	-	+2 900	-	33°25'03.0"N 126°18'31.0"E	-	RNP APCH	IF
003	TF	TEWOO	-	066(058.4)	4.2	-	+1 800	-	33°27'15.3"N 126°22'47.5"E	-	RNP APCH	FAF
004	TF	PC401	-	066(058.4)	2.2	-	+1 000	-	33°28'24.5"N 126°25'01.8"E	-	RNP APCH	SDF
005	TF	RW070	Y	066(058.4)	3.0	-	+640	-	33°29'59.6"N 126°28'06.5"E	-3.00/50	RNP APCH	MAPt
006	TF	PC404	-	066(058.5)	5.2	-	-	-	33°32'42.3"N 126°33'23.4"E	-	RNP APCH	-
007	TF	PETAA	Y	102(094.2)	18.6	-	-	-	33°31'18.0"N 126°55'34.0"E	-	RNP APCH	-
008	HM	PETAA	Y	276(268.2)	-	R	-9 000 +8 000	-230	33°31'18.0"N 126°55'34.0"E	-	RNP APCH	1 min (Outbound timing)

## HOLDING PROCEDURE

Holding Identification	Path Descriptor	Waypoint Identifier	Fly-over	Course/Track °M(°T)	Time (min)	Turn direction	Altitude (ft)	Speed (kt)	Coordinates	VPA/RDH	Navigation specification	Remarks
RNP Y RWY 07	HM	YUMIN	Y	126(118.3)	1.0	L	-7 000 +4 000	-230	33°27'25.7"N 126°13'15.5"E	-	RNAV 1	-

JEJU/Jeju Intl(RKPC)  
RNP Y RWY 07

FAS DATA BLOCK INFORMATION

INPUT DATA

Parameters	Values
Operation Type	0
SBAS Provider Identifier	6 (KASS)
Airport Identifier	RKPC
Runway Number	07
Runway Letter	0 (None)
Approach Performance Designator	0
Route Indicator	
Reference Path Data Selector	0
Reference Path Identifier	K07A
LTP/FTP Latitude	33°29'59.5750"N
LTP/FTP Longitude	126°28'06.4995"E
LTP/FTP Height above ellipsoid (meters)	51.8
FPAP Latitude	33°30'53.5555"N
Delta FPAP Latitude (seconds)	53.9805
FPAP Longitude	126°29'51.5130"E
Delta FPAP Longitude (seconds)	105.0135
Approach Threshold Crossing Height (TCH)	50.0
Approach TCH Units Selector	0 (Feet)
Glidepath Angle (GPA)	3.00
Course Width at Threshold	105.00
Length Offset	0
Horizontal Alert Limit (HAL)	40.0
Vertical Alert Limit (VAL)	50.0

OUTPUT DATA

Data Block	60 03 10 0B 12 07 00 00 01 37 30 0B 2E 68 60 0E C7 3D 46 36 06 16 B9 A5 01 6B 34 03 F4 01 2C 01 64 00 C8 FA 01 05 29 A3
Calculated CRC Value	010529A3

**INTENTIONALLY**

**LEFT**

**BLANK**

**INSTRUMENT  
APPROACH  
CHART - ICAO**

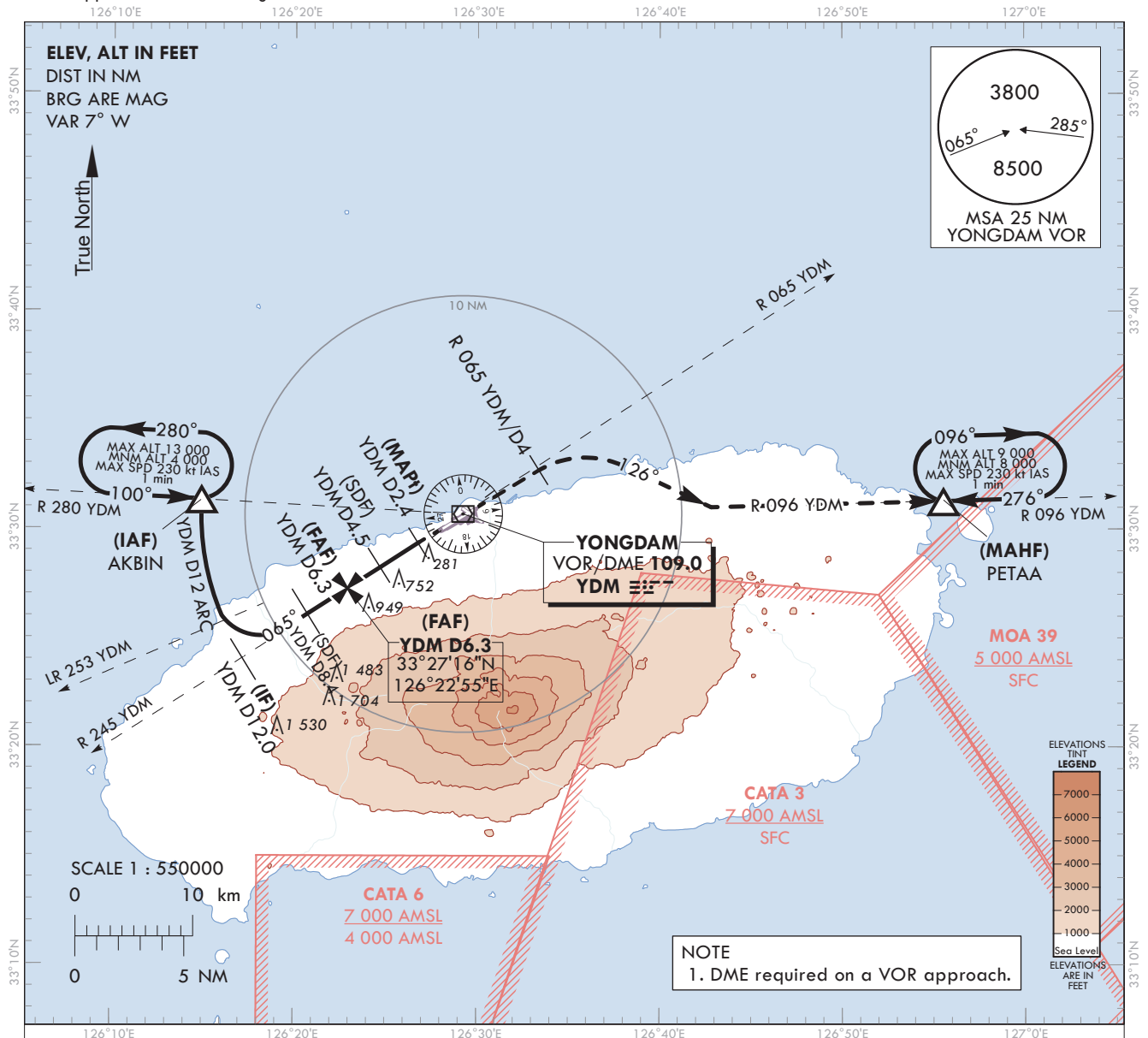
**AERODROME ELEV 119 ft**  
HEIGHTS RELATED TO  
THR RWY 07 - ELEV 87 ft

JEJU APP	121.2
JEJU TWR	124.05
	118.2
	118.55

JEJU/Intl(RKPC)

**VOR RWY 07**

Note : Approach under ICAO Flight Procedures.

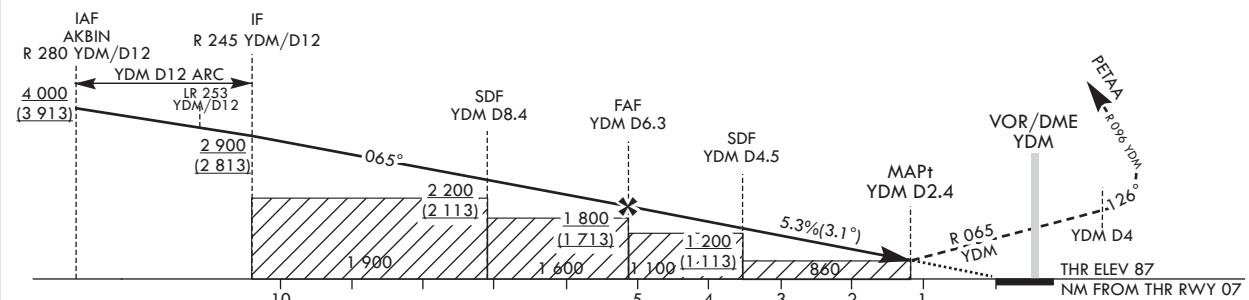


RECOMMENDED PROFILE	DME YDM	6	5	4	3.4
Final Approach Gradient 5.3%, 325 ft/NM	ALT(HGT)	1 702 (1 615)	1 377 (1 290)	1 052 (965)	860 (773)

**MISSED APPROACH**

Climb on R 065 YDM until 4 DME, then Right turn to intercept R 096 YDM to PETAA and Hold at 8 000 ft.

TRANSITION ALT 14 000  
TRANSITION LVL FL 140



OCA (H)	A	B	C	D
Straight-in Approach	860 (773)			

\* Timing Not authorized for defining MAPt.  
\* Circling Not authorized.

Change : Information of landing minima(OCA(H)).

JEJU/Intl(RKPC)  
VOR RWY 07

## AERONAUTICAL DATA TABULATION

VOR Approach to RWY 07 from AKBIN(IAF)		
Fix/point		Coordinates
AKBIN(IAF)	- 12 DME ARC /12.00 NM YDM	33°31'21.5"N 126°14'55.3"E
D12.0 YDM(IF)	- BRG 64.55°/12.00 NM YDM	33°24'10.5"N 126°17'12.1"E
D8.4 YDM(SDF)	- BRG 64.58°/8.40 NM YDM	33°26'07.9"N 126°20'48.9"E
D6.3 YDM(FAF)	- BRG 64.60°/6.30 NM YDM	33°27'16.3"N 126°22'55.4"E
D4.5 YDM(SDF)	- BRG 64.62°/4.50 NM YDM	33°28'14.9"N 126°24'43.9"E
D2.4 YDM(MAPt)	- BRG 64.63°/2.40 NM YDM	33°29'23.3"N 126°26'50.6"E
THR RWY 07	Final approach descent angle 3.14°(FAF - SDF) / 3.02°(SDF - THR)	33°29'59.57"N 126°28'06.50"E
YDM VOR/DME		33°30'41.3"N 126°29'15.3"E
D4.0 YDM	- BRG 64.66°/4.00 NM YDM	33°32'51.3"N 126°33'16.9"E
PETAA	- BRG 95.70°/22.00 NM YDM	33°31'18.0"N 126°55'34.0"E



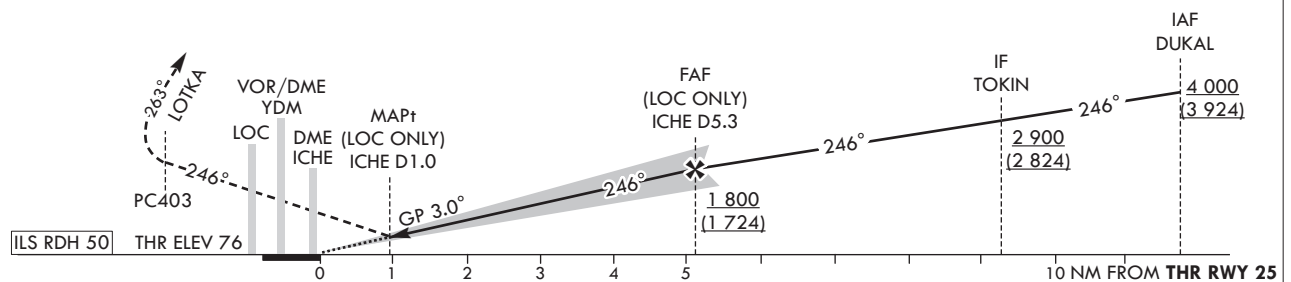
JEJU	APP	121.2
		124.05
JEJU	TWR	118.2
		118.55

**ILS Z or LOC Z RWY 25**

[illegible]

RECOMMENDED PROFILE(LOC ONLY)	DME ICHE	5	4	3	2	1.0	<b>MISSED APPROACH</b> Climb to 6 000 ft on track of 246° to PC403, then RIGHT turn on track of 263° to LOTKA and Hold at 6000 ft.
Final Approach Gradient 5.32%, 323 ft/NM	ALT(HGT)	1 691 (1 615)	1 368 (1 292)	1 045 (969)	722 (646)	400 (324)	

TRANSITION ALT	14 000
TRANSITION LVL	FL 140



OCA (H)		A	B	C	D	DL							
Straight-in Approach	CAT-I	276 (200)					Rate of descent	Knots V/V fpm	60 318	90 478	120 637	150 796	180 955
	LOC	540 (464)					* Timing Not authorized for defining MAPt. * OCH for Circling related to aerodrome ELEV 119 ft.						
Circling		680 (561)	890 (771)	1 380 (1 261)	N/A								

**AIRAC AIP AMDT 9/24**  
**Effective : 1600UTC 30 OCT 2024**

AERONAUTICAL DATA TABULATION

ILS Z or LOC Z Approach to RWY 25 from DUKAL(IAF)		
Fix/point		Coordinates
DUKAL(IAF)		33°38'58.6"N 126°45'38.8"E
TOKIN(IF)	BRG 246.03°/5.00 NM	33°36'21.9"N 126°40'32.2"E
D5.3 ICHE(FAF LOC only)	BRG 245.98°/5.34 NM ICHE	33°33'36.4"N 126°35'08.7"E
D1.0 ICHE(MAPt LOC only)	BRG 245.93°/1.00 NM ICHE	33°31'20.0"N 126°30'43.0"E
THR RWY 25		33°30'53.56"N 126°29'51.51"E
DME ICHE		33°30'51.4"N 126°29'39.1"E
PC403		33°22'44.4"N 126°14'03.0"E
LOTKA		33°21'11.1"N 126°06'52.2"E

**INSTRUMENT  
APPROACH  
CHART - ICAO**

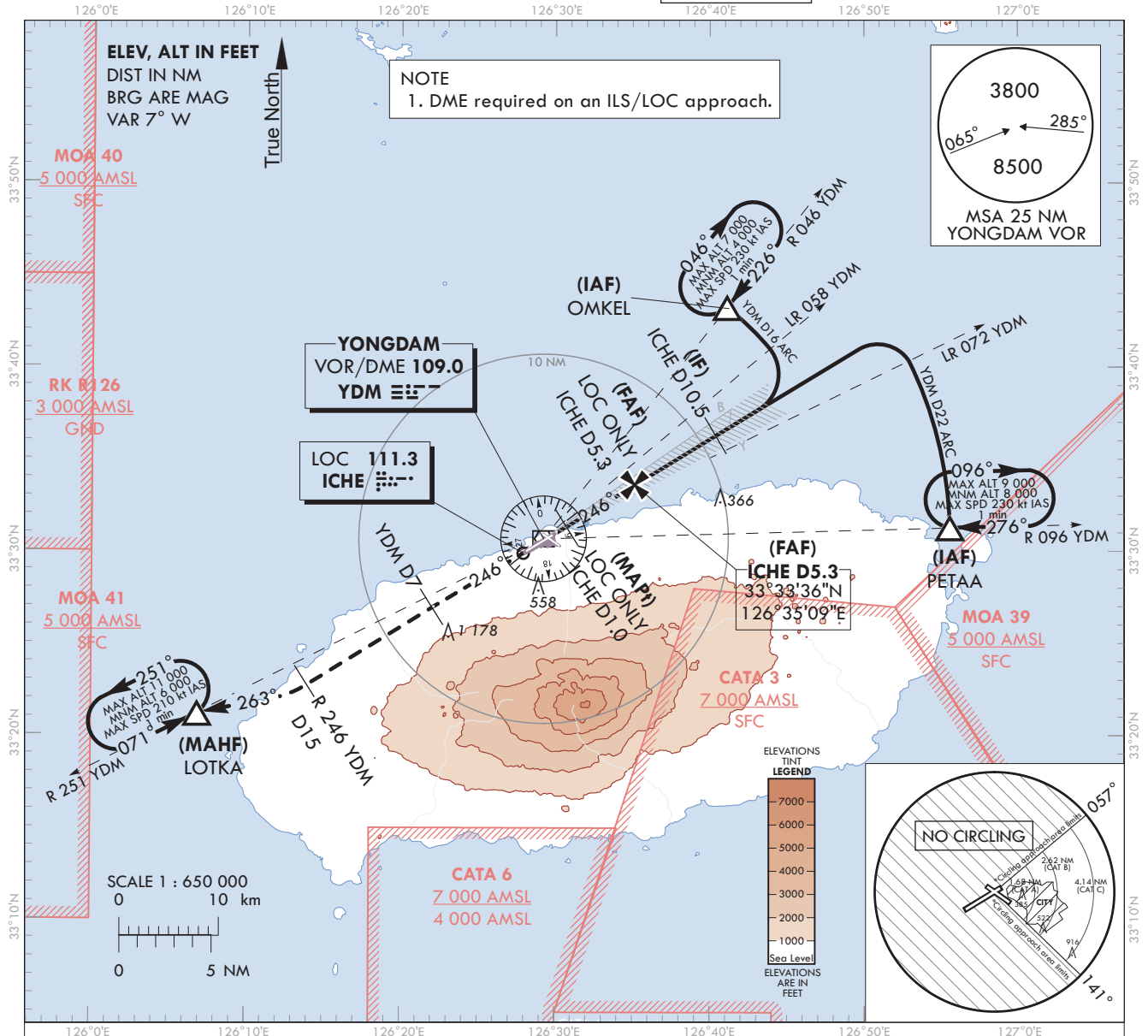
**AERODROME ELEV 119 ft**  
HEIGHTS RELATED TO  
THR RWY 25 - ELEV 76 ft

JEJU APP 121.2  
124.05  
JEJU TWR 118.2  
118.55

**JEJU/Jeju Intl(RKPC)**

**ILS Y or LOC Y RWY 25**

Note : Approach under ICAO Flight Procedure.



RECOMMENDED PROFILE(LOC ONLY)	DME ICH	5	4	3	2	1.0
Final Approach Gradient 5.32%, 323 ft/NM	ALT(HGT)	1 691 (1 615)	1 368 (1 292)	1 045 (969)	722 (646)	400 (324)

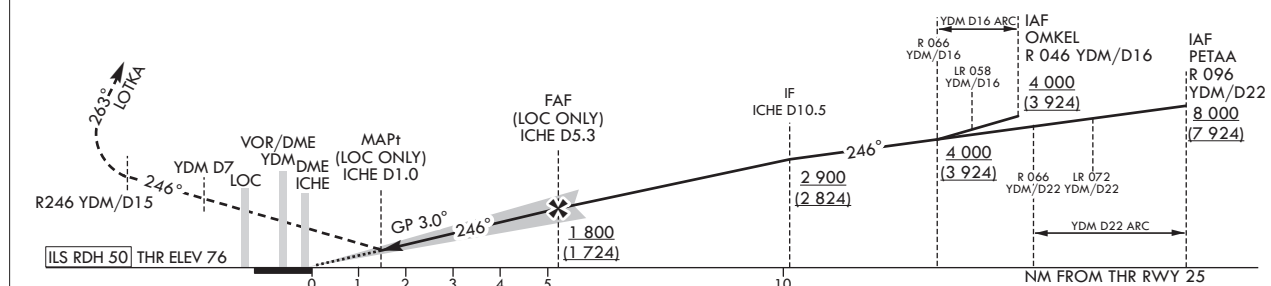
TRANSITION ALT 14 000  
TRANSITION LVL FL 140

**MISSED APPROACH**

Climb straight ahead until YDM D7 to Intercept R 246 YDM/D15 turn RIGHT HDG 263° to LOTKA and Hold at 6 000 ft.

NOTE

1. Missed approach turn limited to maximum of 210 kt IAS.



OCA (H)	A	B	C	D	DL
Straight-in Approach	CAT-I	276 (200)			
	LOC	540 (464)			
Circling		680 (561)	890 (771)	1 380 (1 261)	N/A

Rate of descent	Knots	60	90	120	150	180
V/V fpm		318	478	637	796	955

\* Timing Not authorized for defining MAPt.

\* OCH for Circling related to aerodrome ELEV 119 ft.

Change : Information of landing minima(OCA(H)).

**OFFICE OF CIVIL AVIATION**

**AIRAC AIP AMDT 9/24**  
Effective : 1600UTC 30 OCT 2024

## AERONAUTICAL DATA TABULATION

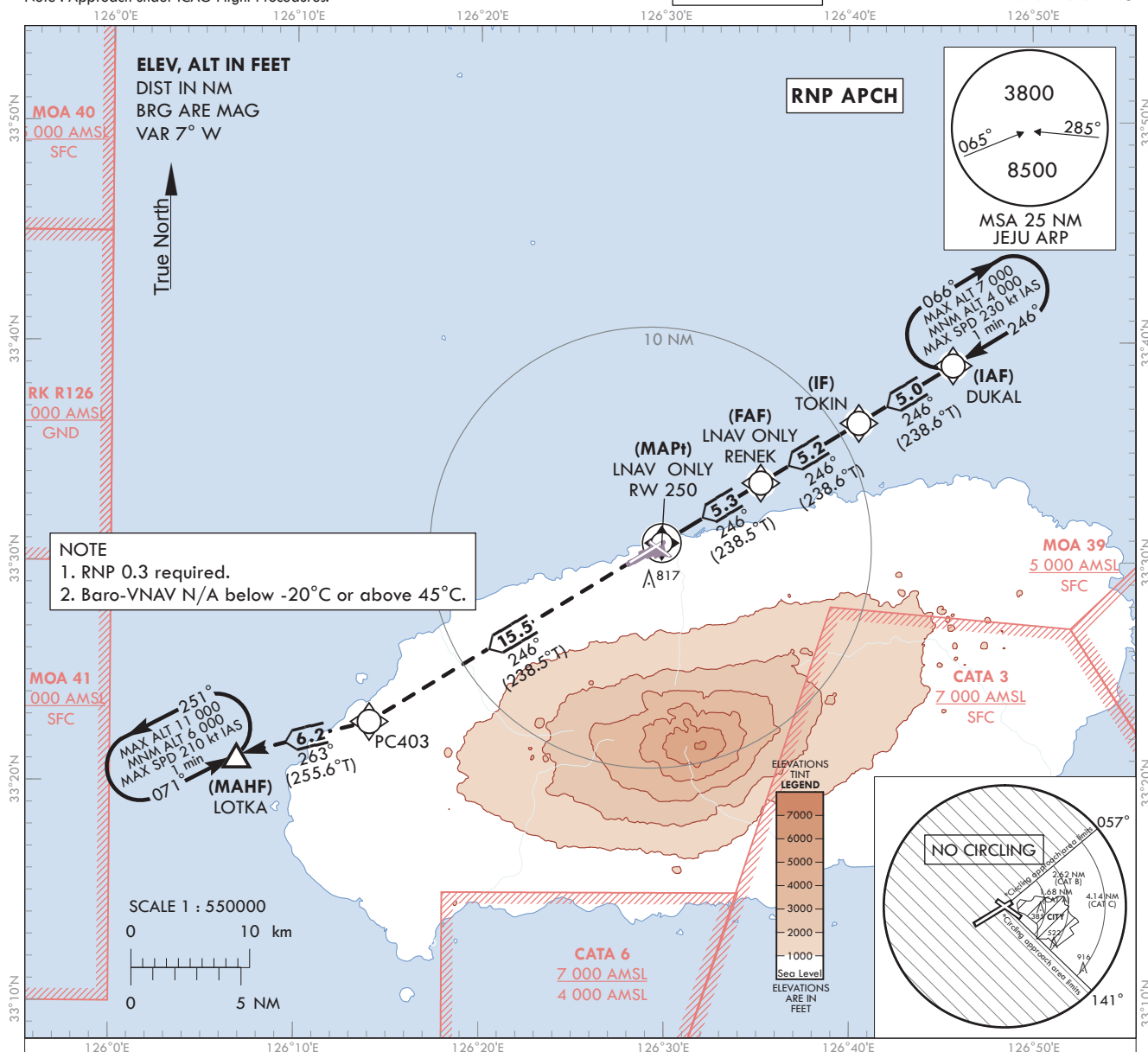
ILS Y or LOC Y Approach to RWY 25 from OMKEL(IAF) or PETAA(IAF)			
Fix/point		Coordinates	
OMKEL(IAF)	16 DME ARC /16.00 NM YDM	33°43'16.2"N	126°41'08.0"E
PETAA(IAF)	22 DME ARC /22.00 NM YDM	33°31'18.0"N	126°55'34.0"E
D10.5 ICHE(IF)	BRG 245.98°/10.50 NM ICHE	33°36'18.2"N	126°40'24.9"E
D5.3 ICHE(FAF LOC only)	BRG 245.93°/5.34 NM ICHE	33°33'36.4"N	126°35'08.7"E
D1.0 ICHE(MAPt LOC only)	BRG 245.93°/1.00 NM ICHE	33°31'20.0"N	126°30'43.0"E
THR RWY 25		33°30'53.56"N	126°29'51.51"E
DME ICHE		33°30'51.4"N	126°29'39.1"E
YDM VOR/DME		33°30'41.3"N	126°29'15.3"E
D7.0 YDM	BRG 246.34°/7.00 NM YDM	33°26'59.7"N	126°22'08.6"E
D15.0 YDM	BRG 245.59°/15.00 NM YDM	33°22'45.9"N	126°14'01.5"E
LOTKA	BRG 262.70°/21.00 NM YDM	33°21'11.1"N	126°06'52.2"E

INSTRUMENT  
APPROACH  
CHART - ICAOAERODROME ELEV 119 ft  
HEIGHTS RELATED TO  
THR RWY 25 - ELEV 76 ftJEJU APP 121.2  
JEJU TWR 124.05  
JEJU TWR 118.2  
JEJU TWR 118.55

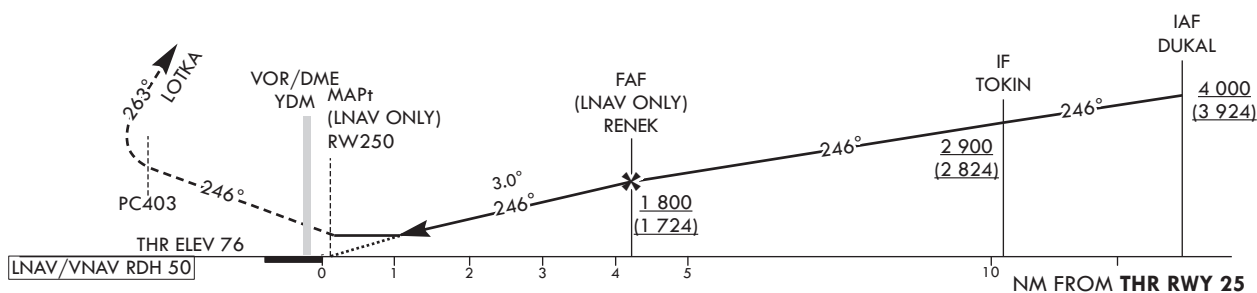
JEJU/Jeju Intl(RKPC)

RNP RWY 25

Note : Approach under ICAO Flight Procedures.



## MISSED APPROACH

Climb to 6 000 ft on track of 246° to PC403, then RIGHT turn  
on track of 263° to LOTKA and hold at 6000 ft.TRANSITION ALT 14 000  
TRANSITION LVL FL 140

OCA (H)		A	B	C	D							
Straight-in Approach	LNAV/VNAV	620 (544)				Rate of descent	Knots	60	90	120	150	180
	LNAV	810 (734)					V/V fpm	319	478	637	797	956
Circling		680 (561)	890 (771)	1 380 (1 261)	N/A	* Timing Not authorized for defining MAPt. * OCH for Circling related to aerodrome ELEV 119 ft.						

Change : Information of landing minima(OCA(H)).

AERONAUTICAL DATA TABULATION

Instrument Approach Procedure Coding Tables

RNP RWY 25

Serial Number	Path Descriptor	Waypoint Identifier	Fly-over	Course/Track °M(T)	Distance (NM)	Turn direction	Altitude (ft)	Speed (kt)	Coordinates	VPA/RDH	Navigation specification	Remarks
001	IF	DUKAL	-	-	-	-	+4 000	-	33°38'58.6"N 126°45'38.8"E	-	RNP APCH	IAF
002	TF	TOKIN	-	246(238.6)	5.0	-	+2 900	-	33°36'21.9"N 126°40'32.2"E	-	RNP APCH	IF
003	TF	RENEK	-	246(238.6)	5.2	-	+1 800	-	33°33'38.6"N 126°35'13.1"E	-	RNP APCH	FAF
004	TF	RW250	Y	246(238.5)	5.3	-	+810	-	33°30'53.6"N 126°29'51.5"E	-3.00/50	RNP APCH	MAPt
005	TF	PC403	-	246(238.5)	15.5	-	-	-	33°22'44.4"N 126°14'03.0"E	-	RNP APCH	-
006	TF	LOTKA	Y	263(255.6)	6.2	-	-	-	33°21'11.1"N 126°06'52.2"E	-	RNP APCH	-
007	HM	LOTKA	Y	071(063.2)	-	L	-11 000 +6 000	-210	33°21'11.1"N 126°06'52.2"E	-	RNP APCH	1 min (Outbound timing)

HOLDING PROCEDURE

Serial Number	Path Descriptor	Waypoint Identifier	Fly-over	Course/Track °M(T)	TIME (min)	Turn direction	Altitude (ft)	Speed (kt)	Coordinates	VPA/RDH	Navigation specification	Remarks
RNP RWY 25	HM	DUKAL	Y	246(238.6)	1.0	R	-7 000 +4 000	-230	33°38'58.6"N 126°45'38.8"E	-	RNAV 1	-

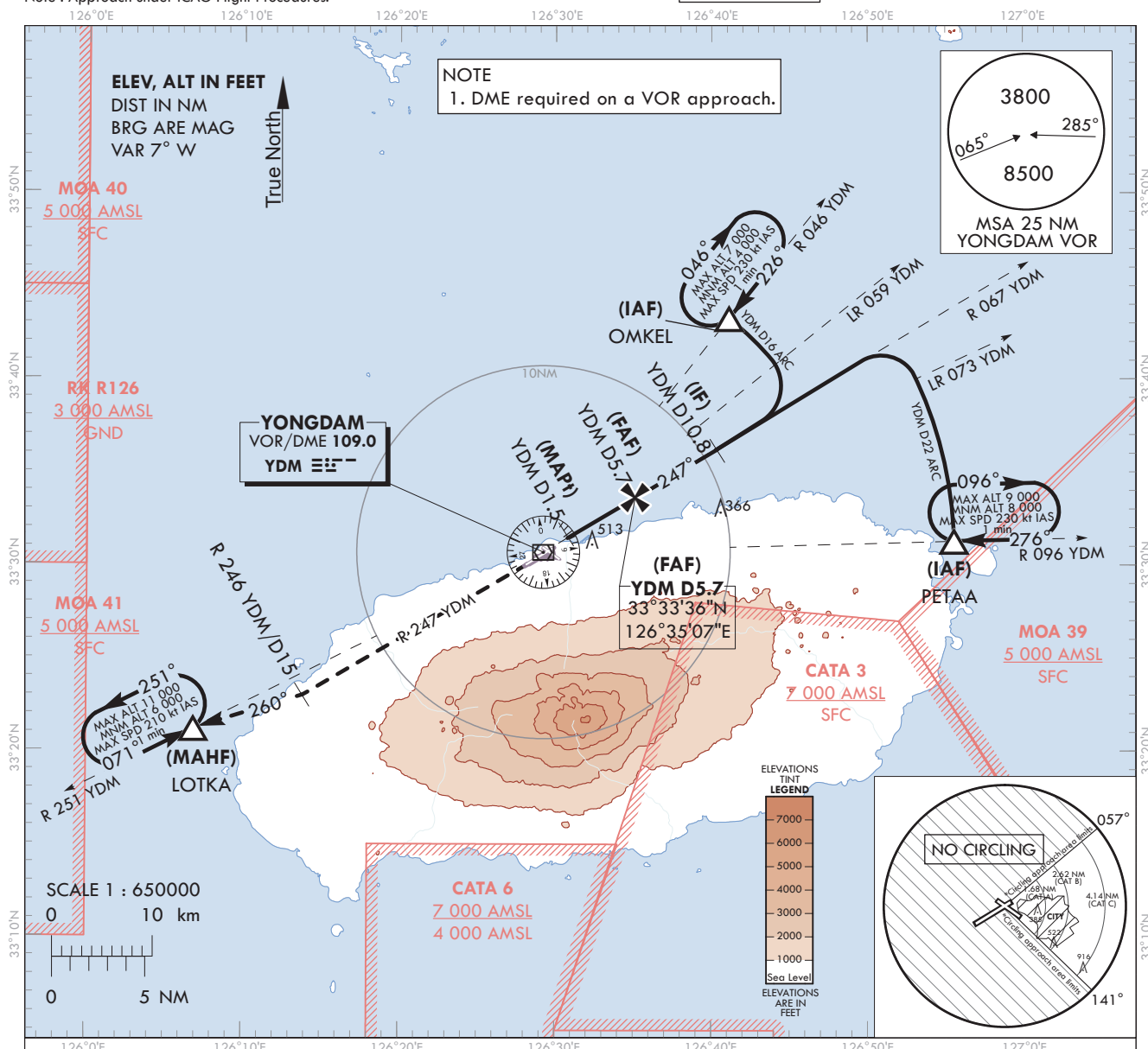
**AERODROME ELEV 119 ft**  
HEIGHTS RELATED TO  
THR RWY 25 - ELEV **76 ft**

JEJU APP	121.2
	124.05
JEJU TWR	118.2
	118.55

**JEJU/Jeju Intl(RKPC)**

**VOR RWY 25**

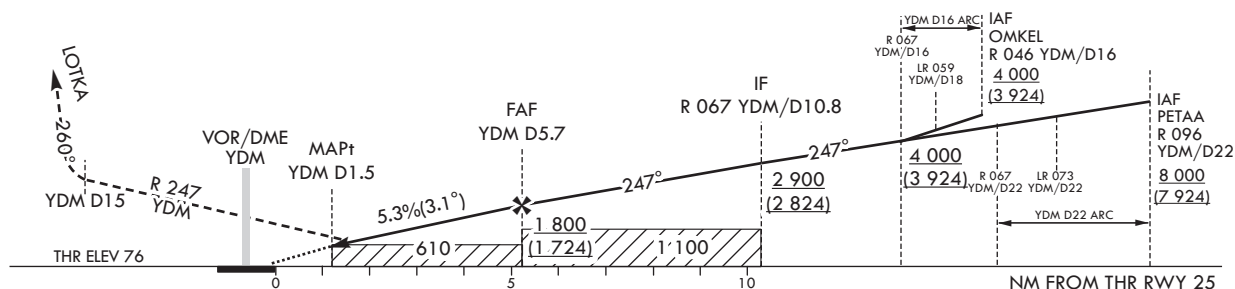
Note : Approach under ICAO Flight Procedures.



Climb on R 247 YDM until 15 DME, then turn Right  
HDG 260° to LOTKA and Hold at 6 000 ft.

RECOMMENDED PROFILE	DME YDM	5	4	3	2.2
Final Approach Gradient 5.34%, 325 ft/NM	ALT(HGT)	1 573 (1 497)	1 248 (1 172)	924 (848)	650 (574)

TRANSITION ALT	14 000
TRANSITION LVL	FL 140



OCA (H)	A	B	C	D
Straight-in Approach	610 (534)			
Circling	680 (561)	890 (771)	1 380 (1 261)	N/A

\* Timing Not authorized for defining MAPt.  
\* OCH for Circling related to aerodrome  
ELEV 119 ft.

Change : Information of landing minima(OCA(H)).				
---	--	--	--	--

## AERONAUTICAL DATA TABULATION

VOR Approach to RWY 25 from OMKEL(IAF) or PETAA(IAF)		
Fix/point		Coordinates
OMKEL(IAF)	- 16 DME ARC/16.00 NM YDM	33°43'16.2"N 126°41'08.0"E
PETAA(IAF)	- 22 DME ARC/22.00 NM YDM	33°31'18.0"N 126°55'34.0"E
D10.8 YDM(IF)	- BRG 246.76°/10.80 NM YDM	33°36'12.8"N 126°40'22.1"E
D5.7 YDM(FAF)	- BRG 246.76°/5.70 NM YDM	33°33'36.4"N 126°35'07.1"E
D1.5 YDM(MAPt)	- BRG 246.71°/1.50 NM YDM	33°31'27.2"N 126°30'47.4"E
THR RWY 25	Final approach descent angle 3.06°	33°30'53.56"N 126°29'51.51"E
YDM VOR/DME		33°30'41.3"N 126°29'15.3"E
D15.0 YDM	- BRG 246.67°/15.00 NM YDM	33°22'59.4"N 126°13'51.7"E
LOTKA	- BRG 260.35°/21.00 NM YDM	33°21'11.1"N 126°06'52.2"E